

MAXICON®

Marine & Submarine Protection System

MAXICON® with extensive track record in submarine cables and pipe protection offers various range of protection. System provided is specifically designed for both onshore to offshore installation.



Covers various terrain from shore-end landings to subsea reefs and rocky surfaces



MATERIAL SELECTION & VERIFICATION TESTING

PT. Indonesia Polyurethane Industry owns a large database of material science. Our precise material formulation will undergo material verification testing in order to verify suitability level against Customer requirements



DESIGN & MANUFACTURING

Fully in-house and controlled design, mold-making and manufacturing benefits our Customer a guaranteed quality and on-time delivery standard. Each Products will be 100% checked and inspected prior to Packing and Delivery



MARKET LEADING

PT. Indonesia Polyurethane Industry, with over 20 years experience becomes a market leading provider of subsea protection systems in Indonesia. Our experience and reputation with more than 10,000 protection systems supplied and beyond 25,000 kilometers length covered makes us a trusted partner in protecting our Customer's billions Dollar assets.



CABLE PROTECTION SYSTEM

Designed to achieve combination of protection and handling-flexibility

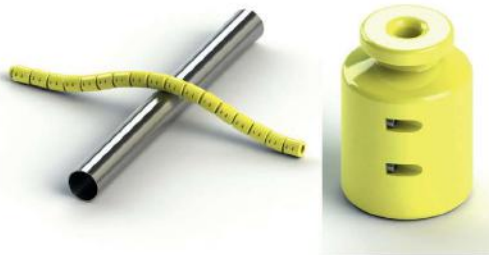
The superior character of abrasion and impact protection and yet a light-weight solution for cables and pipe. We serve a custom design to match various seabed terrain, shore-end landings, cable crossings, scour prevention, reef and rocky terrain.



SEABED PROTECTION MATTRESS

Provide additional protection and increase stability of cables on top of it

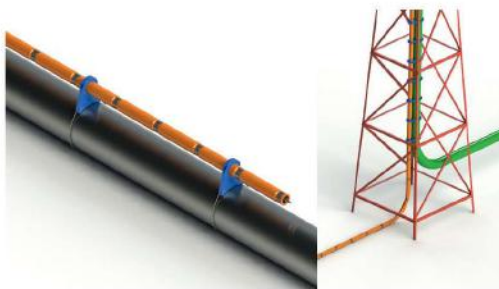
It will cover an intersection point over a rough and rocky terrain. Combination of Seabed Protection Mattress and Cable Protection System will result maximum protection.



BEND RESTRICTOR & STIFFENER

The system offers a polymer and or metal based

Vertebrae system which limits the bend radius to a certain maximum only a few degrees per segment. Each segment will be interlocking and prevents over-bending of cables or umbilicals. Whereas bend stiffeners will limit bending stresses and curvature to acceptable levels.



PIGGYBACK CLAMPS

Used for any subsea and topside application

The system is used for any subsea and topside application for both horizontal and vertical position. It ties smaller cables or pipe to a main larger pipeline or flowline. It will provide a precise and consistent clearance between the two lines.



ARTICULATE PIPE

The system also commonly known as "Split Pipe"

It consists of double-half shells ductile cast iron or Polyurethane material upon request. Suitable for any installation to provide shallow water protection and unburied condition. Our special design may also provide customer a very convenient installation method without any bolting required.