



ISO 9001:2015 CERTIFIED  
AS9100D CERTIFIED



# IPI AERO

Plastic & Rubber Part  
for Aerospace



IPI established is 1989 by manufacturing plywood based spare parts. In 1996, we successfully began commercializing polyurethane-based spare parts.

Since 2017, we have been developing other polymer based materials such as silicone, synthetic-rubber, foam and composite. And now with more than 25 year experience in the elastomer polyurethane, we become one of the largest polyurethane processor in Indonesia.

Employee : 85 total  
Machine : 22 unit  
Business Unit : 10 Industry Segments  
Product Unit : 13 Product Segments  
Certification : AS 9100D,  
ISO 9001:2015, P3DN

Current Market :

Indonesia, Austria, Brazil, Brunei, Colombia,  
Singapore, United Arab Emirates, Australia

## ▶ OUR SERVICES

### ✓ Thermoplastic Injection

Our 300 Ton machine suitable to process any thermoplastic, such as ABS, PP, PE, PC, TPU, TPR, PEEK, etc. Designated to medium-to-high volume capacity of production. IPI Aero has provides components for aerospace MRO market in Indonesia with compliance with FAR 25.853.

### ✓ Polyurethane & Silicone Molding / Casting

For over 20 years, IPI has been molding / casting high quality urethane and silicone parts for various industry. It offers flexibility in design and dimension of products. Dimension can up to 20 meter length. Suitable for low-to-high volume capacity of production.

### ✓ Rubber & Silicone compression

For rubber-based product, our compression division can process NBR, EPDM, Silicone, Natural-rubber.

### ✓ Rigid Foam For Insulation

### ✓ Flexible Foam For Seating & Insulation

IPI provides flexible foam for seating to Indonesian Aerospace for military aircraft. Our foam has been tested and compliance with FAR 25.853.

### ✓ Stereolithography (SLA) 3D Printing

For a rapid prototyping we use 3D printing with FDM for standard resolution and SLA for much higher resolution and smoother finished parts.

### ✓ Vacuum Casting

Part of our additive manufacturing, we provide vacuum casting process to produces low-to-medium volume parts with very delicate detail and smooth surface finished.

## ▶ MACHINING

**13**  
UNITS LATHE

MAX. DIA. 1000 X L. 12000 MM

**3**  
UNITS MILLING

L. 650 X W. 300 X H. 350 MM

**2**  
UNITS CNC ROUTER

L. 1,200 X W. 1,200 X H. 200 MM

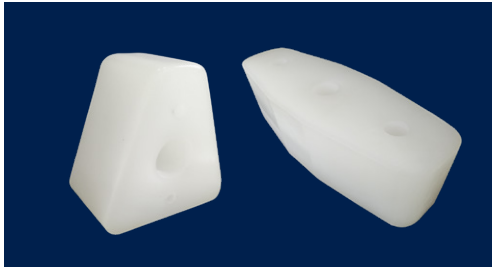
**1**  
UNIT CNC FOR FOAM

L. 2,000 X W. 1,000 X H. 1,200 MM

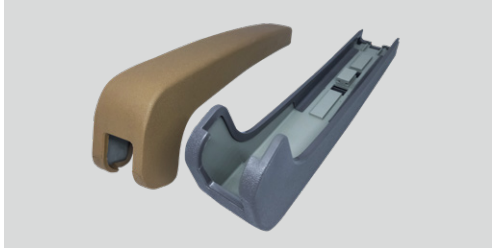
## ▶ CNC ROUTER MILLING MATERIAL

• Aluminum • Polyurethane • Polyamide/Nylon • Phenolic • Hard Rubber • UHMW PE • Foam • Phenolic • Honeycomb

## ► AVIATION COMPONENTS



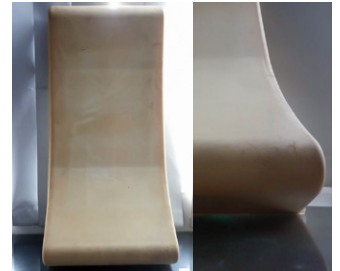
Shock Damper for Main landing Gear of N219 Indonesian Aerospace



Plastic Parts for Interior Seating FAR 25.853 compliance



Foam Seating for CN212



Foam for Seating & Cushioning FAR 25.853 compliance



Wheel for Ground Handling Unit



Window Seal for N219

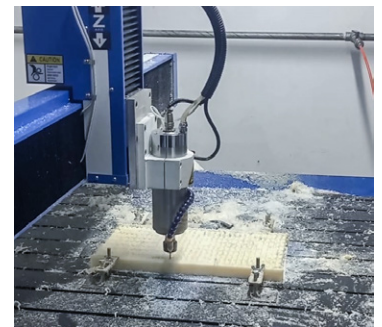
## ► ENGINEERING DESIGN



## ► MOLDING STORAGE



## ► CNC MACHINING



## ► TESTING FACILITY

TEST	METHOD
Hardness	ASTM D2240
Roundness	ASTM D1204
Roughness	ASTM E1926 / ISO 4287:1997
Tensile	ASTM D638 / ISO527-1
Modulus	ASTM D638 / ISO527-1
Elongation	ASTM D638 / ISO527-1

TEST	METHOD
Tear Strength	ASTM D624
Compression Set	ASTM D395
Flexural Test	ASTM D790-17
Compressive Strength	ASTM D695
Flame Test Vertical	FAR25.853
Flame Test Horizontal	FMVSS 302



**PT. Indonesia Polyurethane Industry**  
JL. Raya Legok Km. 7 RT 005/02  
Legok, Tangerang, Banten 15820, Indonesia

Phone. (+6221) 5420 4660  
Email. info@pt-ipi.co.id

